

FW6101 Explosion-protected Worklight



Type of protection: Ex de IIC T4 Gb

■ Applications

- Suitable for illumination of hazardous locations in oil and gas industry, petrochemical industry and shipping industry.
- Ideal for illumination of construction sites, rescue sites, etc.

■ Core value of product

Adjustable beam

- Light distribution: narrow beam and wide beam, fulfilling requirements of different locations.
- More uniformly diffused light due to unique design of reflector.
- MH lamp features natural light, energy saving, available for instant start and warm start.

Adjustable height

- It is fitted with telescopic sections for height adjustment.
- Telescopic sections can be locked quickly and firmly.

Suitable for adverse environment applications

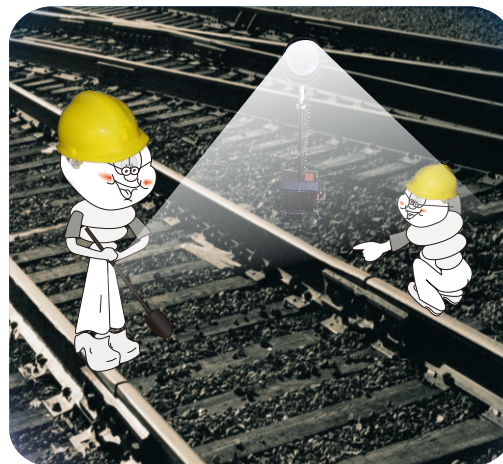
- Reliable sealing of internal electrical parts ensures excellent vibration resistance and insulation.
- Degree of protection is IP65, and it is certified wind stability up to Scale 6, suitable for use in adverse environments.

Small weight and elegant appearance

- Elegant appearance due to unique design.
- Small weight, easy for moving.

Fitted with wheels (type for off-road vehicle), suitable for bumpy road applications

- Big size of wheels, easy for climbing.
- Supplied with abrasion resistance wheels.



OK OCEAN'S KING LIGHTING SCIENCE & TECHNOLOGY CO., LTD.
海洋王

Tel: +86 755 86037934

Fax: +86 755 26406711

<http://www.oceansking.com>

Email: global@oceansking.com

■ Function features

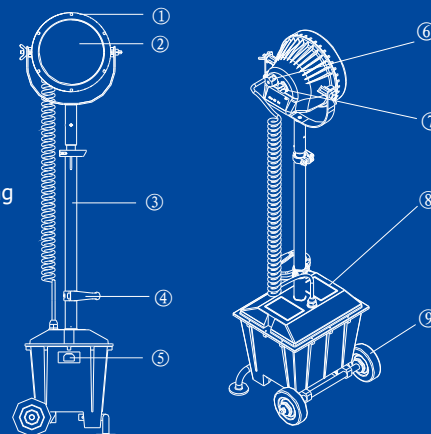
Model: FW6101/BT

Special design of light distribution: narrow beam and wide beam can be switched over easily, fulfilling requirements of different locations.

Long operating duration: more than 8 hours.

■ Components

1. Light head
2. Lamp
3. Telescopic sections
4. Handle
5. Charging port
6. Button for beam switching
7. On/Off switch
8. Battery box
9. Wheel



■ Technical data

Model: FW6101/BT

1. Rated voltage: 24 V DC

2. Rated capacity: 12 Ah

3. Lamp

Rated power: 35W

Luminous flux: 3200 lm

Life: 10000 h

4. Operating duration: 8 h

5. Charging time: 16 h

6. Battery life: approx. 1000 cycles

7. Dimensions: 345mm x 265mm x 1530mm (open)

345mm x 265mm x 1140mm (closed)

8. Weight: 18 kg

9. Degree of protection: IP 65

